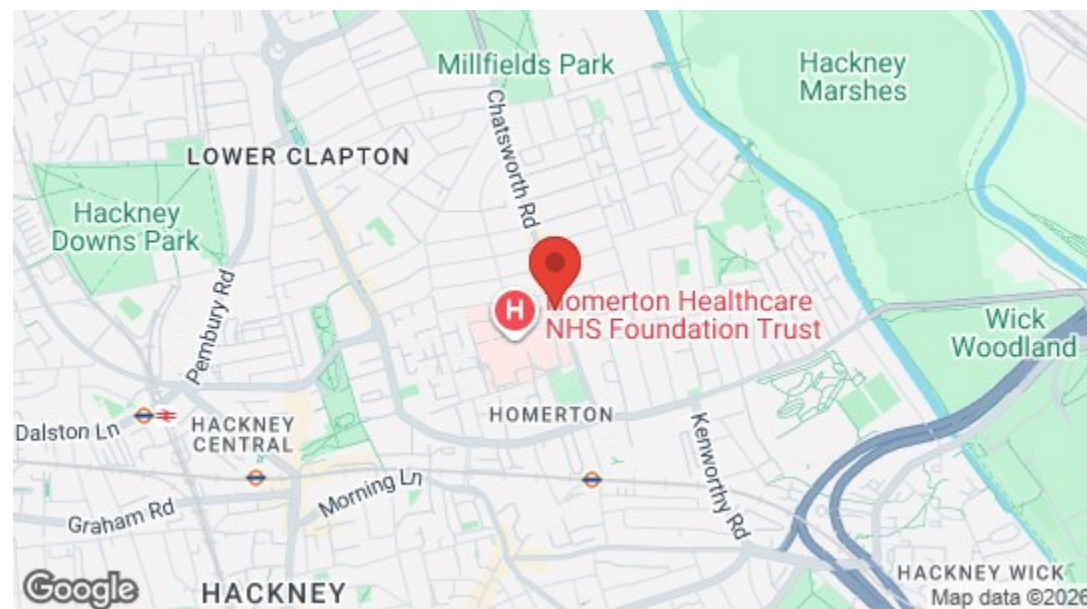


Chatsworth Road, Hackney
£2,900 Per Calendar Month
3 bed, Flat



Energy Efficiency Rating		
	Current	Potential
Very energy efficient - lower running costs		
(92 plus) A		
(81-91) B		
(69-80) C		
(55-68) D		
(39-54) E		
(21-38) F		
(1-20) G		
Not energy efficient - higher running costs		
England & Wales	EU Directive 2002/91/EC	



➔➔ E17 Office
236 Hoe Street
E17 3AY
0203 397 9797
hello17@stowbrothers.com

➔➔ E11 Office
117a High Street
E11 2RL
0203 397 2222
hello11@stowbrothers.com

➔➔ E4 Office
1 Bank Buildings,
The Avenue, E4 9LE
0203 369 6444
hello4@stowbrothers.com

stowbrothers.com
f i t @stowbrothers

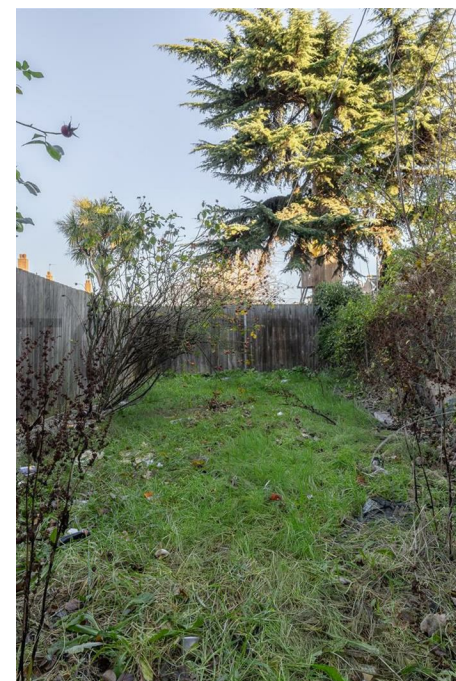


Features

- Three Bedroom Maisonette
- Period Conversion
- Eat In Kitchen
- Private Garden
- Moments From Millfields Park
- Cafes & Restaurants Nearby

An artfully arranged three bedroom apartment, with a lengthy private rear garden and the green and blue expanse of Hackney Marshes just a half mile away on foot. Split over two storeys, you have 750 square feet to stretch out in.

You're especially well served for nature here. As well as Hackney Marshes, you have Hackney Downs Park, Clapton Pond, Millfields Park and even Victoria Park all within walking distance.



WHAT ELSE?

- Hackney Downs overground is just twenty minutes on foot and will get you to Liverpool Street in ten, for a door to door City commute of barely half an hour.
- Your new local is HØstWine Bar, literally steps away and equally happy serving up artisanal coffee or well curated vintages.
- Overseen by mature trees and surrounded by timber fencing your rear garden is lengthy lush and a superb outdoor retreat.





➡ IF YOU LIVED HERE...

Step inside and your substantial reception room is straight ahead. Totalling 170 square feet, you have soft grey carpet underfoot, the high ceilings of the period and a wealth of natural light from the double glazed bay window. Past bedroom one you'll find the kitchen, bright and generous once again, with smart new cabinets and counters, plus a full suite of appliances.

Downstairs now for your family bathroom, a simple pristine affair with immaculate white tilework and a shower over the tub. Both bedrooms down here are solid doubles, 100 square feet apiece and finished in the same simple cream paintwork and soft grey carpet as the sleeper upstairs. Bedroom three leads out to the garden, where a patio leads to a substantial, raised lawn.

Outside and you have the famous Chatsworth Road Market right on your doorstep. Taking place every Sunday, here you'll find award winning butchers, fishmongers and greengrocers, plus a huge range of other stalls, a whole host of vintage finds and some of the best street food in London. If nature's more your thing then, as noted, you have a huge choice of greenery, including Hackney Marshes, just half a mile away on foot, across the River Lee Navigation.

